



# PROMATION ENGINEERING

Precision Actuation for Industry

...Partners, Above and Beyond

## Overview

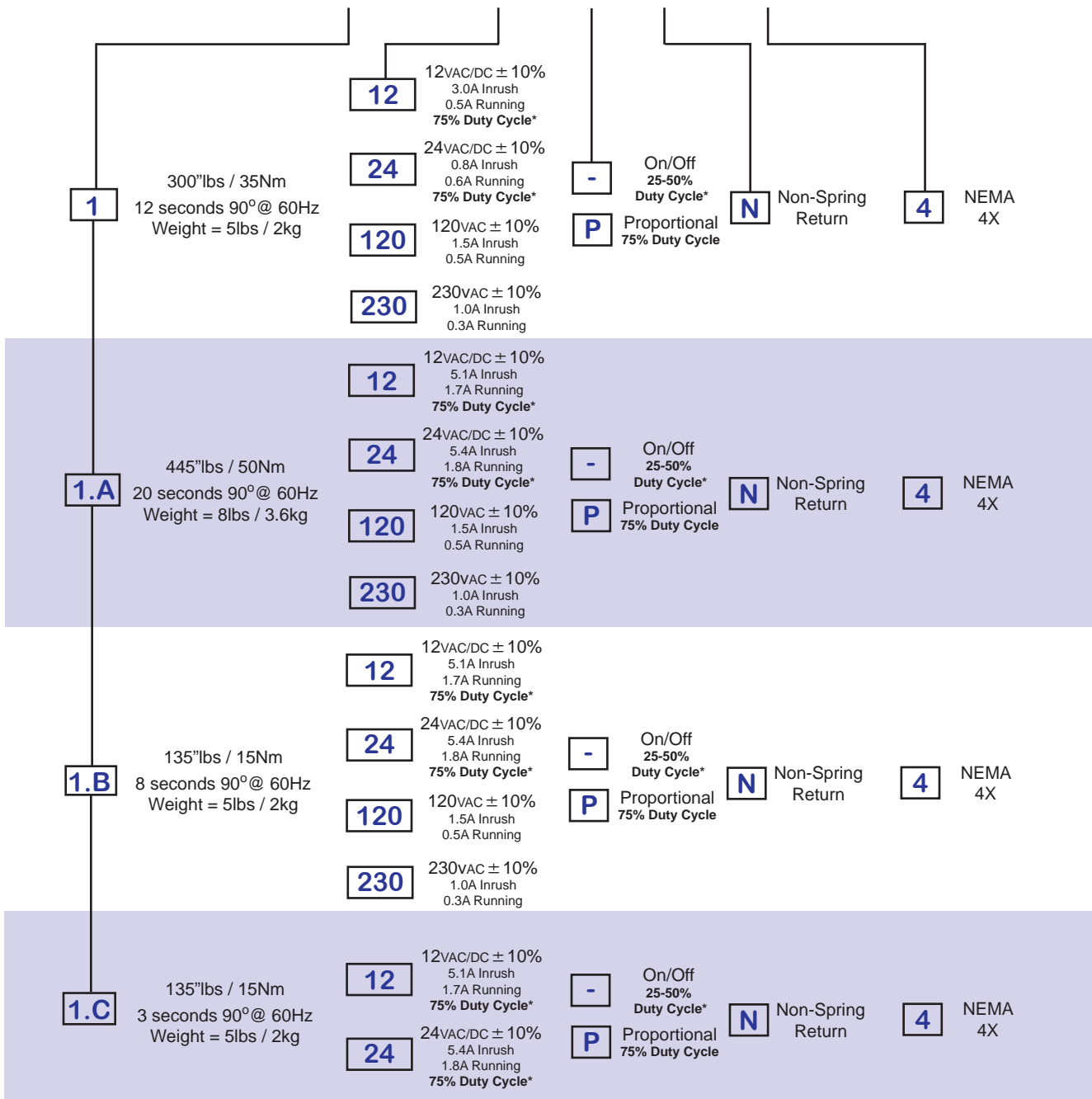
# P1 Series

Actuator Specifications	P1				P1.A			
	300"lbs / 35Nm				445"lbs / 50Nm			
Torque lb/Nm	12vac/dc	24vac/dc	120vac	230vac	12vac/dc	24vac/dc	120vac	230vac
Supply Voltage	12vac/dc	24vac/dc	120vac	230vac	12vac/dc	24vac/dc	120vac	230vac
Max Inrush Current	3.0A	0.8A	1.5A	1.0A	5.1A	5.4A	1.5A	1.0A
Running Current	0.5A	0.6A	0.5A	0.3A	1.7A	1.8A	0.5A	0.3A
Runtime (90°@60/50Hz)	15 sec		12/13 sec		20 sec			
Weight	5lbs / 2kg				8lbs / 3.6kg			
Mechanical Connections	ISO5211 F03/F05 8pt 14mm				ISO5211 F07 8pt 17mm			
Electrical Entry	(2) 1/2" NPT				(2) 1/2" NPT			
Electrical Terminations	14 - 18 Ga.				14 - 18 Ga.			
Environmental Rating	4, 4X				4, 4X			
Manual Override	8mm Socket Drive				5mm Wrench Drive (P1.A only)			
Control	On/Off/Jog/Proportional				On/Off/Jog/Proportional			
Case material	Aluminum Alloy, Powder Coated				Aluminum Alloy, Powder Coated			
Motor Protection	Split Phase Capacitor				Split Phase Capacitor			
120/230vac Operation (On/Off)	275°F/135°C Thermal H Class				275°F/135°C Thermal H Class			
120/230vac Operation (Mod)	DC Brush Type				DC Brush Type			
12/24vac/dc (All)	275°F/135°C Thermal H Class				275°F/135°C Thermal H Class			
Ambient Temperature	-22°F to +150°F				-22°F to +150°F			
Operating Range	-30°C to +65°C				-30°C to +65°C			

Actuator Specifications	P1.B				P1.C	
	135"lbs / 15Nm				135"lbs / 15Nm	
Torque lb/Nm	12vdc	24vdc	120vac	230vac	12vdc	24vdc
Supply Voltage	12vdc	24vdc	120vac	230vac	12vdc	24vdc
Max Inrush Current	5.1A	5.4A	1.5A	1.0A	5.1A	5.4A
Running Current	1.7A	1.8A	0.5A	0.3A	1.7A	1.8A
Runtime (90°@60/50Hz)	<b>8 sec</b>				<b>3 sec</b>	
Weight	5lbs / 2kg				5lbs / 2kg	
Mechanical Connections	ISO5211 F03/F05 8pt 14mm				ISO5211 F03/F05 8pt 14mm	
Electrical Entry	(2) 1/2" NPT				(2) 1/2" NPT	
Electrical Terminations	14 - 18 Ga.				14 - 18 Ga.	
Environmental Rating	4, 4X				4, 4X	
Manual Override	8mm Socket Drive				8mm Socket Drive	
Control	On/Off/Jog <b>ONLY</b>				On/Off <b>ONLY</b>	
Case material	Aluminum Alloy, Powder Coated				Aluminum Alloy, Powder Coated	
Motor Protection (On/Off)	Split Phase Capacitor				N/A	
120vac or 230vac Operation	275°F/135°C Thermal H Class				N/A	
Motor Protection (On/Off)	DC Brush Type				DC Brush Type	
12/24 VDC	275°F/135°C Thermal H Class				275°F/135°C Thermal H Class	
Ambient Temperature	-22°F to +150°F				-22°F to +150°F	
Operating Range	-30°C to +65°C				-30°C to +65°C	

An electric actuator designed for load requirements of up to 445"lbs. The actuator comes standard with two auxiliary switches (shared common, rated at 3A 250V Max), an internal low power heater, a NEMA 4X environmental rating, and in 12VAC/DC, 24VAC/DC, 120VAC or 230VAC supply voltages. The P1, P1.B, P1.C mechanical connections are ISO5211 compliant, utilizing an F03/F05 bolt pattern and an 8 point 14mm female drive. The P1.A mechanical connections are ISO5211 compliant, utilizing an F07 bolt pattern and an 8 point 17mm female drive. The P1 Series is available as on/off or two position models that can also be used in bump/jog applications. Or it can be ordered with an internal proportional control card that accepts a wide range of control signals and generates multiple feedback signals.

# P 1 - 120 P N 4



P1 (Typical) Shown



ISO F03/05 Mounting Detail, 8mm socket override and 8 point 14mm female drive on P1 Series actuators.



Simplified wiring under the cover makes field connections easier and less prone to loose connections and wiring errors.

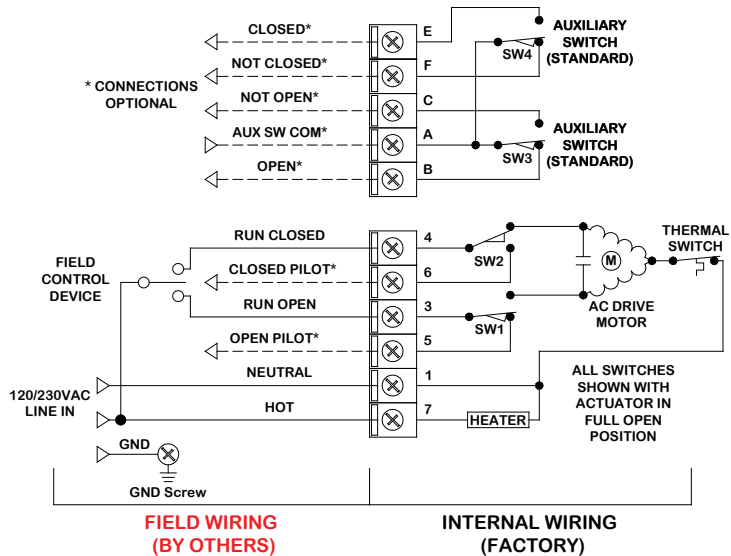


# Wiring Diagrams for P1 Series -

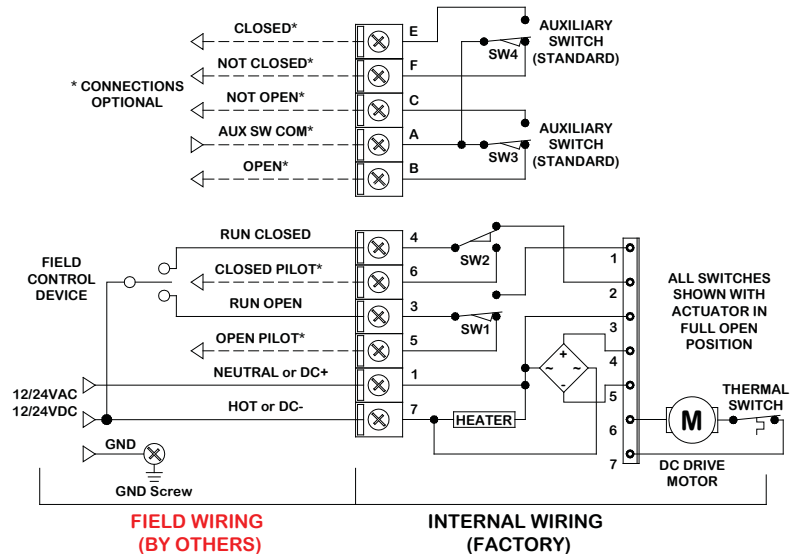
## On/Off/Jog Control

Field Control Device may be relay contact, Switch or Triac type. Pilot device 3A MAX. Auxiliary switches are rated 3A @ 250vac MAX. Terminals A-F are dry type Form C. Terminals accept 14-18ga solid/stranded wire.

Parallel control of multiple On/Off actuators requires isolation relays. (Refer to Technical Wiring Supplement)



\* Duty cycle is defined as the ratio of run time vs. off time, and is a function of environmental conditions including ambient temperature, supply voltage and control signal stability. Note: Duty Cycle rating on ALL proportional control and all 12/24VAC/VDC actuators is 75%. All others are 25-50% depending on the application.



## Proportional Control

Control Signal Inputs (selectable and programmable):  
 2-10vdc, 1-5vdc, 4-20mA  
**Common cannot be ground referenced. Signal return MUST be isolated from ground.**

Input impedance: 100k ohms (2-10vdc)  
 200k ohms (1-5vdc)  
 250 ohms (4-20mA)  
 Sensitivity: 100mV (2-10vdc)  
 50mV (1-5vdc)  
 80uA (4-20mA)

Feedback Signal Output (selectable):  
 2-10vdc or 4-20mA  
 Referenced to Signal Return terminals.  
 Max Load: 500 ohms

There are no alarm on fail functions on this controller.

Terminals accept 14-18ga solid/stranded wire.

